

The canopy is made of high purity aluminium pressing serving as a lamp compartment and reflector. In addition, two chemically brightened and anodized aluminium mirrors are attached to produce asymmetrical cut-off light distribution. The high power factor control gear housing and end support is made of heavy gauge aluminium alloy and bolted through the canopy. The luminaire is enclosed by uv resistant thermo acrylic bowl and secured by non-corrodible hinge and snap-catches. Canopy is entirely anodized and sealed with neoprene or silicone rubber gasket. The end support contains ballast, capacitor, wiring and terminal block-connector. All luminaires are ready wired and tested for connection with 1 phase 220 volt, 50 Hz. supply. IP 54/23 CLASS I



Applications

For roadway and streetlight, warehouse areas, docks interchanges, stock yards, airports parking

Control Gear

Integral with power factor (P.F.) correction not less than 0.9

Optics/Material

Reflector, made of high purity anodized aluminum

Lamps

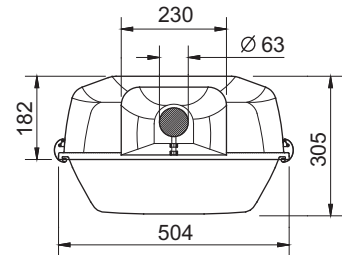
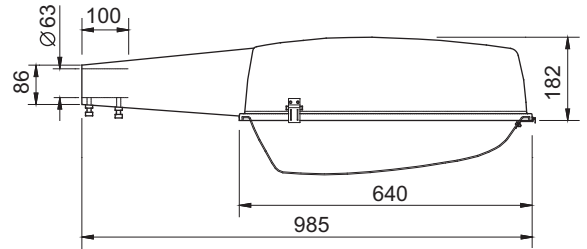
150W-400W High Pressure Sodium Lamp
250W-400W Metal Halide or High Pressure Mercury Lamp

Materials/finish

Body : non corrodible aluminum alloy with grey paint coating
Reflector cover : acrylic refractor bowl
Catches : Stainless steel

Mounting

Poles (Side entry or Pole top)



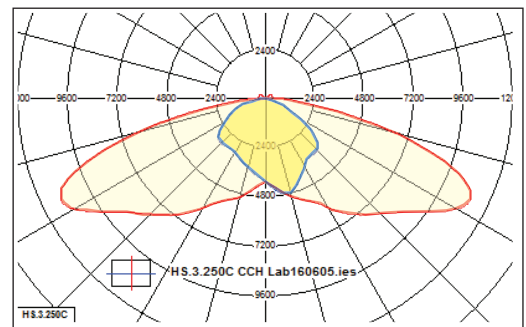
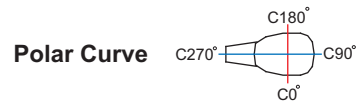
Dimensions in mm.

ORDER CODE

Type	Lamp
HS.3.150C	High Pressure Sodium 150W.
HS.3.250C	High Pressure Sodium 250W.
HS.3.400C	High Pressure Sodium 400W.
MH.3.250C	Metal Halide 250W.
MH.3.400C	Metal Halide 400W.
LM.3.250C	High Pressure Mercury 250W.
LM.3.400C	High Pressure Mercury 400W.

HS = High Pressure Sodium, MH = Metal Halide
LM = High Pressure Mercury

Complete custom design, and photometric data available upon request



Iso-Lux Diagram

