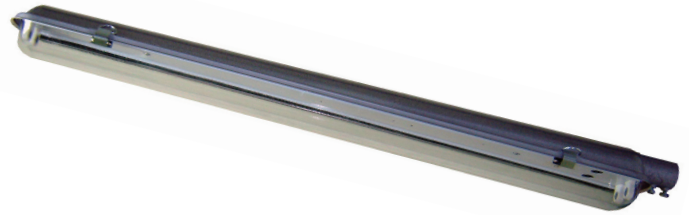


Luminaire body made of noncorrodible light alloy with gray paint coating. Interior reflector made of sheet with white paint coating. Enclosing bowl made of clear Acrylic and secured by shap-catches. Gasket between the enclosing bowl and luminaire body made of neoprene synthetic rubber Built-in ballast,capacitor,wiring and terminal block-connector. Ready for 1 phase 220 volts,50 Hz. Supply Class I



### Applications

For roadway and streetlight, warehouse, docks, interchanges, stock yards, airport or parking area

### Control Gear

Integral with power factor (P.F.) correction not less than 0.9

### Lamps

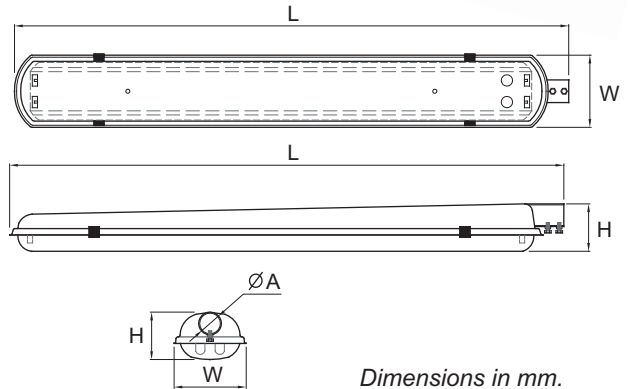
1x28 or 2x28 Watt (T5) Fluorescent Lamp  
1x18, 2x18, 1x36 or 2x36 Watt (T8) Fluorescent Lamp

### Materials/finish

Body : Heavy gauge noncorrodible aluminum alloy, Gray paint coating  
Cover : Clear acrylic  
Catches : Stainless steel

### Mounting

Poles (Side entry)



Dimensions in mm.

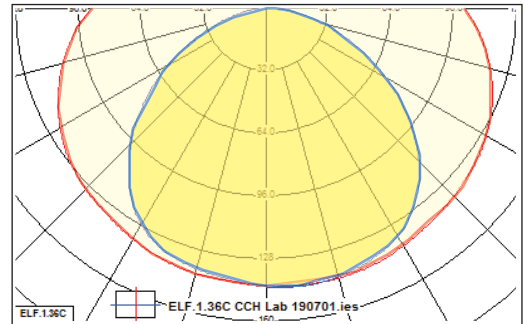
Size	1x18 W.	2x18 W.	1x28 W. 1x36 W.	2x28 W. 2x36 W.
W	130	180	125	165
L	735	810	1355	1375
H	110	130	110	130
A	35	50	35	50

## ORDER CODE

Type	Lamp
ELF.1.18C	Fluorescent 1 x 18 W. (T8)
ELF.2.18C	Fluorescent 2 x 18 W. (T8)
ELF.1.36C	Fluorescent 1 x 36 W. (T8)
ELF.2.36C	Fluorescent 2 x 36 W. (T8)
ELF.1.28C	Fluorescent 1 x 28 W. (T5)
ELF.2.28C	Fluorescent 2 x 28 W. (T5)

Complete custom design, and photometric data available upon request

### Polar Curve



### Iso-Lux Diagram

