

The new LED street light luminaire provides improved horizontal and vertical uniformity and reduced glare. This die-cast aluminium body combines strength, reliability and optimum photometric performance using LED technology minimizes light emission towards the upper hemisphere and provides a high degree of protection (IP65). It contains no hazardous materials for friendly environment. It provides a 20 to 30 percent reduction in system energy consumption and reduces maintenance frequency and has an estimated service life of more than 50,000 hours rated life (more than 10 years). Surge Protection 10 kV.

Applications

For roadway lighting, urban environments, government & municipal, pedestrian & recreation, or public facility lighting

LED Driver

The LED driver is situated in an independently mounted compartment in the optical assembly

Optics

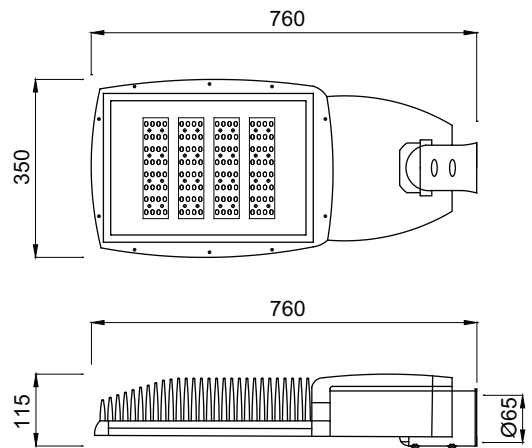
Optical assembly hermetically sealed providing IP65 protection & replaceable CRI >70, CCT 3000, 4000 or 5700 Kelvin, 100 lm/W. Type II Streetlight

Life time

50,000 hours

Installation / Mounting

Side entry mounting Ø60 mm. bracket



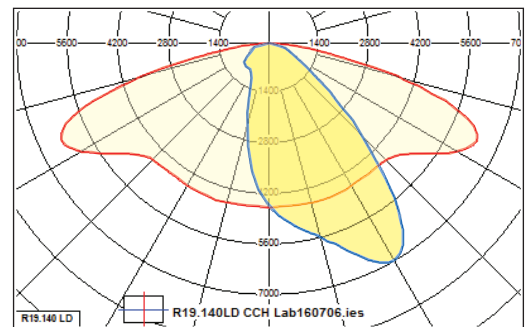
Dimensions in mm.

ORDER CODE

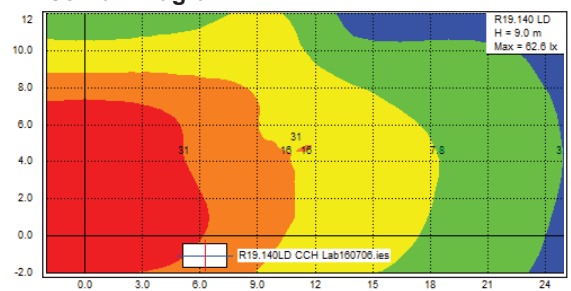
Type	Lamp
R19.70.LD	LED 70 W.
R19.80.LD	LED 80 W.
R19.90.LD	LED 90 W.
R19.100.LD	LED 100 W.
R19.110.LD	LED 110 W.
R19.120.LD	LED 120 W.
R19.130.LD	LED 130 W.
R19.140.LD	LED 140 W.
R19.150.LD	LED 150 W.
R19.160.LD	LED 160 W.
R19.170.LD	LED 170 W.
R19.180.LD	LED 180 W.

Complete custom design, and photometric data available upon request

Polar Curve



Iso-Lux Diagram



RD-RL-033/Rev. No.01