

# R40 series



## Road and Street Lighting LED



The new LED street light luminaire provides improved horizontal and vertical uniformity and reduced glare. This die-cast aluminium body combines strength, reliability and optimum photometric performance using LED technology minimizes light emission towards the upper hemisphere and provides a high degree of protection (IP66). It contains no hazardous materials for friendly environment. It provides a 20 to 30 percent reduction in system energy consumption and reduces maintenance frequency and has an estimated service life of more than 50,000 hours rated life (more than 10 years). Surge Protection 10 kV.

### Applications

For roadway lighting, urban environments, government & municipal, pedestrian & recreation, or public facility lighting

### LED Driver

The LED driver is situated in an independently mounted compartment in the optical assembly

### Optics

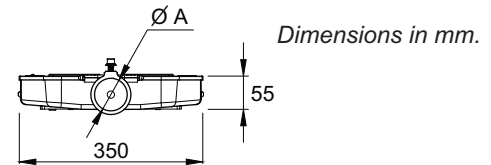
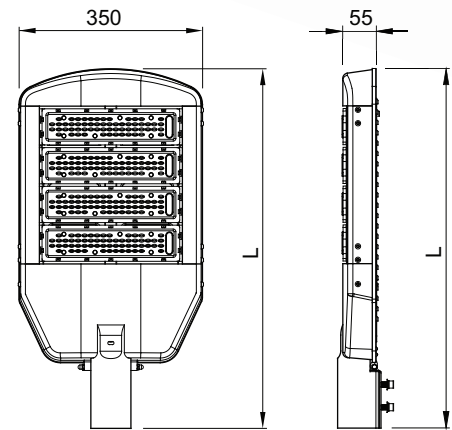
Optical made from polycarbonate assembly hermetically sealed providing IP66 protection & replaceable  
CRI >70, CCT 3000, 4000 or 5700 Kelvin, 150 lm/W. Type II Streetlight

### Life time

50,000 hours

### Installation / Mounting

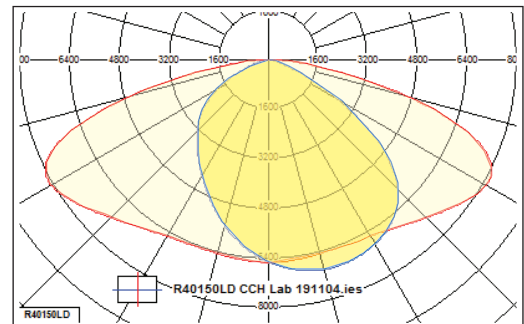
Side entry mounting Ø42 or 60 mm. bracket



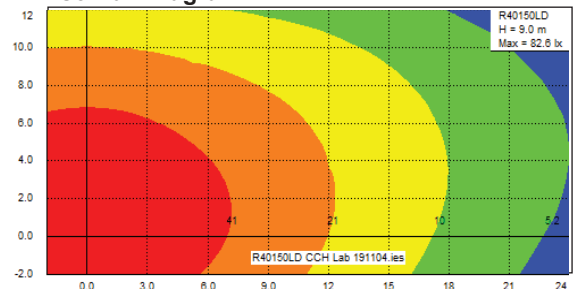
## ORDER CODE

| Type       | Lamp       | L (mm.)<br><i>(May change.)</i> | ØA (mm.)<br><i>(May change.)</i> |
|------------|------------|---------------------------------|----------------------------------|
| R40.30 LD  | LED 30 W.  | 560                             | 45                               |
| R40.35 LD  | LED 35 W.  | 560                             | 45                               |
| R40.40 LD  | LED 40 W.  | 560                             | 45                               |
| R40.45 LD  | LED 45 W.  | 560                             | 45                               |
| R40.50 LD  | LED 50 W.  | 560                             | 45                               |
| R40.55 LD  | LED 55 W.  | 560                             | 45                               |
| R40.60 LD  | LED 60 W.  | 560                             | 45                               |
| R40.65 LD  | LED 65 W.  | 560                             | 45                               |
| R40.70 LD  | LED 70 W.  | 560                             | 45                               |
| R40.75 LD  | LED 75 W.  | 560                             | 45                               |
| R40.80 LD  | LED 80 W.  | 640                             | 65                               |
| R40.85 LD  | LED 85 W.  | 640                             | 65                               |
| R40.90 LD  | LED 90 W.  | 640                             | 65                               |
| R40.95 LD  | LED 95 W.  | 640                             | 65                               |
| R40.100 LD | LED 100 W. | 640                             | 65                               |
| R40.105 LD | LED 105 W. | 640                             | 65                               |
| R40.110 LD | LED 110 W. | 640                             | 65                               |
| R40.115 LD | LED 115 W. | 720                             | 65                               |
| R40.120 LD | LED 120 W. | 720                             | 65                               |
| R40.125 LD | LED 125 W. | 720                             | 65                               |
| R40.130 LD | LED 130 W. | 720                             | 65                               |
| R40.135 LD | LED 135 W. | 720                             | 65                               |
| R40.140 LD | LED 140 W. | 720                             | 65                               |
| R40.145 LD | LED 145 W. | 720                             | 65                               |
| R40.150 LD | LED 150 W. | 720                             | 65                               |
| R40.155 LD | LED 155 W. | 800                             | 65                               |
| R40.160 LD | LED 160 W. | 800                             | 65                               |
| R40.165 LD | LED 165 W. | 800                             | 65                               |
| R40.170 LD | LED 170 W. | 800                             | 65                               |
| R40.175 LD | LED 175 W. | 800                             | 65                               |
| R40.180 LD | LED 180 W. | 800                             | 65                               |

### Polar Curve



### Iso-Lux Diagram



Complete custom design, and photometric data available upon request



## CHUE CHIN HUA CO.,LTD.

6 Moo4 Suksawad Road, Bangkru, Phrapradaeng,  
Samutprakarn 10130  
Tel: (662)091-8511 Fax: (662)463-3944-5  
e-mail: pole-sale@cch.co.th  
www.cch.co.th

